

## REPAIR AND SERVICE

If your Smoke Detector is faulty, remove the unit from the base.

**Do not tamper with the Sealed Source as it contains a small amount of radio-active material.** Return the unit to place of purchase, including a not outlining the fault and ensure unit is properly packed to avoid damage. Include your name, address and phone number. There may be a small charge for out of warranty repairs. **Do not send the unit via the post.** Return unwanted Smoke Detectors to your supplier or local Department of Health. Alternate disposal is not permitted.

### Limited two Year Warranty

Firetronics Pty Ltd warrants this product to be free from defects in material and workmanship for a period of two years from the date of purchase. Subject to the following conditions of warranty, if the product fails to operate for any reason (except as listed below) within the warranty period and the product is returned to the place of purchase at the purchaser's expense. Firetronics will not be responsible for loss or damage during shipping. Firetronics Pty Ltd obligation, and your exclusive remedy, will be to repair or replace the unit at our discretion (excluding any labour charges/costs relating to removal and or reinstallation of the product).

### Conditions of warranty

1. Proof of purchase (Purchaser's receipt or Invoice) must accompany the faulty unit.
2. The product must not be defaced, misused, abused, changed or tampered with or damaged by accident, improper installation or operation.
3. Firetronics Pty Ltd does not accept liability for any direct or consequential damage to property or personal injury. Loss or other expenses arising from misuse or incorrect installation and operation of this product.
4. The warranty shall not apply to any batteries used with the product or to any damage caused by such batteries.
5. The product must be maintained /regularly cleaned and tested in accordance with the supplied instructions.
6. Firetronics Pty Ltd disclaims all other warranties and liabilities, whether expressed or implied, and whether arising by virtue of statute or otherwise are hereby excluded, apart from any warranties created by state Law. No such warranty shall extend beyond the above terms of this warranty unless so specified by Law in Australia.

This Smoke Detector is proudly designed, manufactured and distributed by FIRETRONICS PTY LTD, SYDNEY, AUSTRALIA  
\*PATENTS PENDING, ALL RIGHTS RESERVED

## SPECIFICATIONS

### MODEL FID-N

Designed for connection to security & fire panels. 12-24 V D.C. operation. Unit will signal alarm via internal sounder and relay output contacts. FID-N has a non-latching LED output (LED will extinguish when smoke has cleared from the chamber).

### MODEL FID-L

Designed for connection to security & fire panels. 12-24 V D.C. operation. Unit will signal alarm via internal sounder and relay output contacts. FID-L has a latching LED output (LED can only be reset by removal and restoration of power).

Model	FID-N	FID-L
Voltage	12-24V DC	
Standby Current	800 uA - 1.5 mA	
Alarm Current	<45mA	
Detection Method	Ionization Double Chamber 33.3kBq Am 241	
Sensitivity	Factory Adjustable	
Alarm Display	Flashing Red LED	Red LED constantly lit
Relay Output	NO/NC 30V 1A Relay Contacts	
Reset	Automatic when chamber clears of smoke	Remove and restore power to reset
Op. Temp.	0 deg. C to 50 deg. C	
Dimensions	113mm X 76mm	
Weight	178gms	
Sounder	85dB @ 3m	

This device contains a small amount of radioactive material. This detector contains 33.3kBq Americium 241, A radioactive material and is made in compliance with ISO 2919.

**FIRETRONICS**  
**PTY LTD**  
**A.C.N. 003533159**



**IONIZATION  
SMOKE DETECTOR  
ALARM**



Approval No. afp - 939  
No. afp - 922



AUSTRALIAN MADE

**MODELS FID-N (NON-LATCHING)  
& FID-L (LATCHING LED)  
INSTRUCTIONS**

## IMPORTANT

Read all instructions before installing your SMOKE DETECTOR ALARM.

## INSTRUCTIONS

1. See figure 1 for the preferred locations to install your Smoke Detector Alarms:

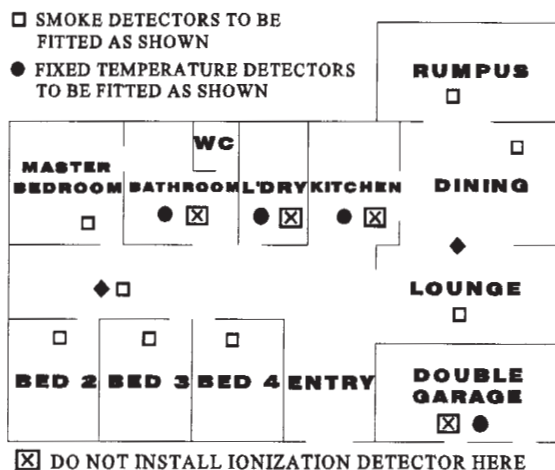


Figure 1.

◆ Install detectors for minimum protection (only if doors are kept open).

□ Install for maximum protection.

2. Do not mount your Smoke Detectors in locations where they may encounter high or low temperature extremes, or high humidity.

3. When installing the Smoke Detector on the ceiling, choose a spot as close to the centre as possible, at least 250mm from any wall and at least 600mm from any corner. Do not install in "dead air" space (e.g. mount at least 90cm from the apex of a sloping or peaked ceiling). Smoke Detector alarms have decreased operational effectiveness when installed in "dead air" spaces.

4. Unlatch the Smoke Detector base from the housing and use the screws and nylon anchors provided to secure the base to the ceiling. See **Figure 2**.

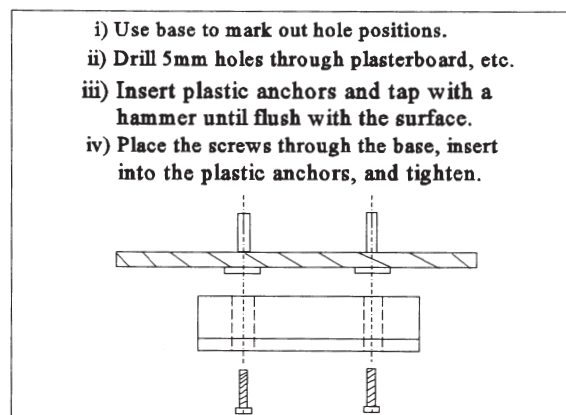


Figure 2.

5. Connect Fire/Security wiring to the terminal block in the base. (Note that some systems will require installation of an end-of-line resistor - see your control panel instructions for wiring information).

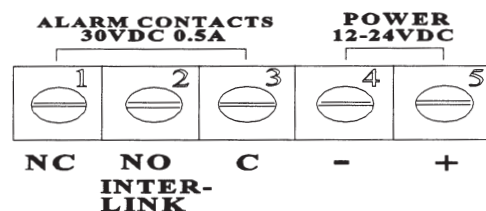


Figure 3. Terminal Block Connections.

6. Using the two locating lugs, push the smoke detector onto the base. (Note that the lugs are keyed to allow assembly in one direction only).

7. FIRETRONICS Smoke Detector alarms model FID-N + FID-L are powered through a fire or security panel with battery back up provided in panel.

**WARNING:** Removal of primary power source when replacing standby battery, from fire/security panel renders the Smoke Detector alarms inoperative until re-installed. The back up battery in your security/fire panel should have a minimum capacity of 12V 7.5AH.

Should you encounter a power failure and your Smoke Detector alarms chirp, it is an indication that your panel's standby battery needs to be checked and or replaced. It is recommended that the battery back up in your control panel be replaced at 5 years intervals, or if you have experienced problems during testing of your backup battery or power failure of your control panel.

## OPERATION AND TESTING

The Smoke Detector will be operational once it is connected. The RED LED indicator will flash at 45 second intervals during normal operation.

Constant horn sounding is indication of alarm.

The Smoke Detector is designed to detect smoke and other products of combustion and to alarm at an early stage. For the model FID-N, the RED LED will flash rapidly when smoke is detected. For the model FID-L, it will light constantly until reset from the control panel.

## NUSIANCE/FALSE ALARMS

If you are experiencing false alarms, please check the instructions to ensure correct installation. Make sure your Smoke Detector is not installed near potential sources of smoke such as cook-tops, open fires, fluorescent lighting, etc. Locate away from very dusty or dirty areas as dust build-up inside the unit can make it prone to false alarms.

## TESTING THE SMOKE DETECTOR

To test the smoke detector, simply press and hold the test button until the alarm sounds. This will test the electronic circuit in your Smoke Detector to ensure its correct operation. To terminate the test, simply release the test button. (Note that for model FID-L, you may need to reset your control panel- please consult your installation technician for the correct procedure). The Smoke Detector should be tested frequently, **at least once every month**.

**NOTE:** the service life of the Smoke Detector is ten (10) years.

## CLEANING AND MAINTENANCE

Use a vacuum cleaner with the fine nozzle attached to vacuum around the grilled area of your Smoke Alarm.

This should be done frequently, at least weekly in dusty environments.