



**Firetronics Pty Ltd**

## Ionization Smoke detectors Model; FID-



### Operation instruction and Manual

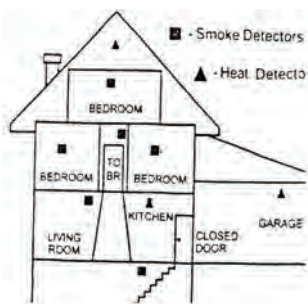
#### Location of your smoke alarms

Install one smoke detector in each bedroom and hallway/passageway one above every stairway for best protection.

Do not mount your smoke detector in locations where they may encounter high or low temperature extremes/high humidity.

When installing the smoke alarm choose a spot as close to the centre as Possible, at least 250mm from any wall and 600mm from any corner. Do not install in dead air space (e.g. mount at least 90cm from apex of A sloping or peaked ceiling.) Ensure that you install smoke alarms at least Every 7.5 meters apart in hallways and rooms at least 3 meters from each bedroom.

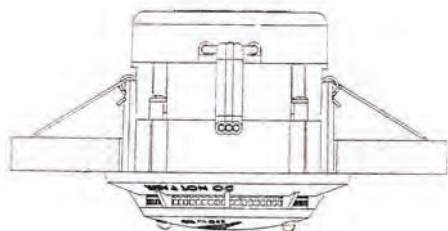
Do not install smoke detectors in the following locations;  
Bathrooms, Kitchens, Garages, Near air-condition vents, windows.



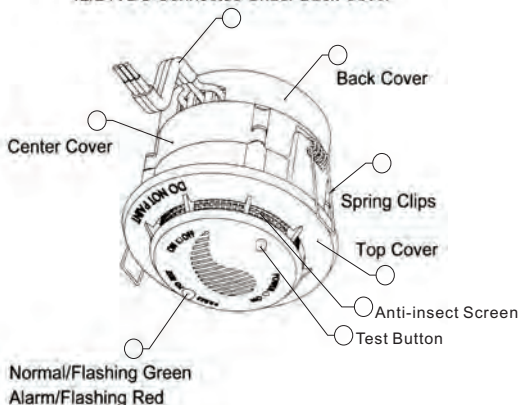
#### Installation Instructions

240VAC smoke alarms should be installed by a qualified electrician In accordance with the regulations for electrical installations. Please cut out a 90mm down light size hole in the ceiling making sure that it is free of any insulation material for proper air flow/circulation above the smoke alarm.

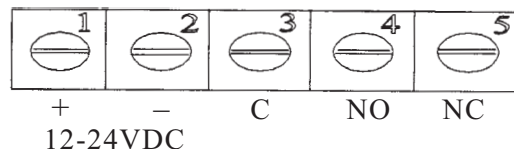
To fit the smoke alarm after connection of wiring simply push through The hole, same as a down light fitting.



12/24VDC Connected Under Back Cover



Connect Fire/security wiring to the terminal block in the back of the Detector by removing the back base cover and follow the directions for connections as below (note that some systems will require installation of an end of line resistor-see your control panel for more information.



#### Note to Installers

The 240VAC smoke alarm will be damaged and warranty will be void if the unit is incorrectly wired. Check to make sure green mains indicator light is on.

#### Warning

Smoke alarms will not operate if power supply is interrupted and/or battery is dead or not charged.

Constant exposure to high or low temperature or high humidity may reduce battery life.

#### Constant Horn Sounding is an indication of alarm.

Rechargeable battery/long life battery may need to be replaced if detector chirps at about once per minute.

Turn off 240VAC power (mains connected smoke alarms only) prior to checking/replacement of battery and call a qualified electrician for assistance.

Move the header shunt across on to the two headers to activate the smoke detector.



#### Move the header shunt across on to the Two headers to activate the smoke alarm. Otherwise the smoke alarm will not work

For 240VAC model smoke alarms connect to a continues 240VAC 50 Hz circuit.

Ensure that unit cannot be inadvertently overridden by any switching device. Interlink smoke alarms must be connected to the same final sub-circuit.

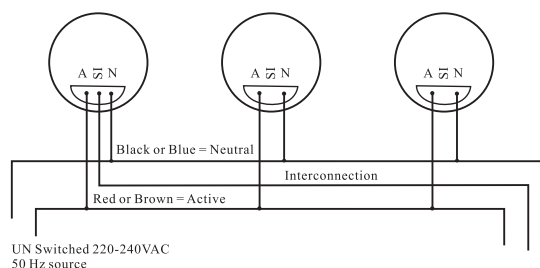
It is recommended that smoke alarms be wired to the light circuit or circuit not used by anything else at the distribution board.

Use standard 1.5mm lighting wire for connection to the smoke alarms.

N=Neutral

SI= Switch/ Interlink

A= Active




The active (brown) wire should be connected to the terminal marked A-active. The Neutral (blue) wire should be connected to the terminal marked N-neutral. To interconnect the smoke alarms connect all the SI terminals together. Only use Firetronics smoke alarms when you need smoke alarms to be interconnected together.

A maximum of 1000 meters of wire can be used, maximum resistance between each interconnection should be 48 ohms.

After connecting all the interlinkable smoke alarms test the first alarm by Pressing down and holding the pushbutton for approx 10 to 15 seconds.

The first smoke alarm will sound and then the other units will follow and the Red alarm LED on the smoke alarm being tested will be the only unit that will flash at one second intervals. Check all alarms similarly.

The smoke alarm is not to be earthed so no connection is to be made to Terminals or wires marked with the letter E, the symbol  or coloured green or green and yellow.

## Firetronics Smoke Alarm Specifications

Model	FID-N/FID-L	FID-H	FID-NP
Voltage	12-24VDC	9v battery	12-24VDC
Relay	NO/NC 30v	N/A	N/A
Output	1A relay contact		
Reset	Automatic for all model except FID-L		
Operating Temperature	0deg C to 50 deg C		

Model	FID-M	FID-MRLY	FID-MRLI
Voltage	240VAC	240VAC	240VAC
	Above all with rechargeable battery back up		
Relay	Free relay contact		
Output	N/A		
Interlink			
Facility	Yes	No	Yes
Detection			
Method	Ionization double chamber 33.3kBq AM 241		
	For all models		
Alarm Display	Flashing Red LED for all above		
Green LED	Flashing at 45 second intervals		
	Indicates Mains power is <b>ON</b>		
Sounder Level	85dB at three meters minimum		
	All models.		

**FID-N** smoke alarms have a non-latching LED, which indicates when smoke Alarm goes into alarm. NO/NC 30V 1A relay contact.

**FID-L** smoke alarms have a latching LED, which indicates when smoke Alarm goes into alarm. NO/NC 30V 1A relay contact.

**Models FID-N & FID-L** are for connection to security panel.

**Model FID-H** is a 9V battery operated smoke alarm and is supplied with a long life Lithium battery or alkaline battery. When the smoke alarm chirps it is an indication that the battery needs replacement.

**Model FID-NP** is for connection to Firetronics Micro 2001 Panel.

**FID-M** is a 240VAC smoke alarm with rechargeable battery back up, and is Interconnectable to same model smoke alarms.

**FID-MRLY** is a 240VAC smoke alarm with rechargeable battery back up and **Free** contact relay output.

**FID-MRLI** is a 240VAC smoke alarm with rechargeable battery back up, free contact relay output and is interlinkable to same model smoke alarms.

### Nuisance/False alarms

If you are experiencing false alarms, please check the instructions to ensure correct installation. Make sure your smoke alarm is not installed near potential sources of smoke such as cook-tops, open fires, fluorescent lighting, damp or humid areas.

### Testing and operation of smoke alarms and back up battery.

First check to ensure the green LED is flashing at 45-second intervals. To test the smoke alarm press and hold down the push button for 10-15 seconds the green LED will change to red and flash fast and the smoke alarm's internal sounder will alarm. If the smoke alarms are interlinked all the smoke alarms should also sound alarm. Release the push button when you are satisfied all smoke alarms are sounding alarm.

### **Do not test your smoke alarms with open fires, this may damage your Smoke alarms.**

Test the rechargeable battery back up (240VAC models only) in your smoke Alarm at least once a year, simply switch off the power connection to the smoke alarm, the green power LED should go off, test button the smoke alarm as you normally would and the sounder should sound. Wait ten minutes to make sure the smoke alarm does not chirp (which would indicate battery needs replacement) and then reconnect power.

Your smoke alarms (240VAC models only) rechargeable battery back up once fully charged should last up to one week in case of power failure.

**The service life of the Ionization smoke alarms is Ten year and Australian Standards AS 3786 states the smoke alarms need to be replaced every Ten years.**

### Cleaning and maintenance

Use a vacuum cleaner with the fine nozzle attached to vacuum around the grilled area of your smoke alarm frequently. Test your smoke alarms monthly.

### Repair and service

If your smoke alarm is faulty, **do not tamper with it as this will void warranty.** Low voltage detectors such as 12-24v and battery operated smoke alarms may Be disconnected by the customer, 240VAC smoke alarms must be disconnected by a qualified electrician and return to supplier or manufacturer with a note outlining the problem and copy of invoice/receipt including return address prepaid.

**Ensure proper packing to avoid damage during transit.**

## Develop and practice an escape plan

Make a floor plan of your premises and draw an escape plan in case of fire.

Have a family meeting and familiarise everyone with the sound of the smoke alarm. Visit the Fire brigade web site for more information.

## Limited Warranty conditions

Firetronics Pty Limited warrants that this smoke alarm is free from defects in Material and workmanship for a period of two (FID-N, FID-L, FID-M, FID-MRLY, FID-MRLI, FID-NP) and six years for FID-H from date of purchase.

Subject to the following conditions of warranty;

1. Proof of purchase receipt/invoice must accompany the faulty units.
2. The warranty is conditional on the unit being installed by a licensed and Qualified electrician (240VAC models) and in accordance with the instructions supplied.
3. The unit must not be defaced, changed or tampered with or damaged by accident, short circuited, loaded beyond rating or otherwise damaged by improper installation and operation.
4. The obligation of Firetronics Pty Limited under this warranty is limited to service/repair or replacement of the device when the unit is returned to us freight prepaid. Firetronics Pty Limited will not be responsible for loss or damage during shipping.
5. Firetronics Pty Ltd does not accept liability for any direct or consequential Damage or loss, including but not limited to, property or personal injury, loss or other expenses arising from misuse or incorrect installation and operation of their products.
6. The unit must be maintained /regularly cleaned and tested in accordance with the supplied instructions.
7. All other warranties, whether expresses or implied, and whether arising by virtue of Statute or otherwise are hereby excluded, apart from warranties under Australian Law. No such warranty shall extend beyond our terms of warranty unless so specified by Australian Law.
8. This warranty does not cover any battery that may be supplied with or Included with the smoke alarms.

**There are no user serviceable parts in this smoke alarm. Please do not open or Tamper or attempt repair of the smoke alarms.**

This device contains a small amount of radioactive material.

The radioactive material is sealed within the smoke alarm and consumers will not come into direct contact with it even when replacing battery.

This device contains 33.3kBq Americium 241, A radioactive Material and is made in compliance with ISO 2919.

The Firetronics range of smoke alarms are proudly designed and manufactured In Australia by Firetronics Pty Limited.

ABN 46003533159

28 Vore Street Silverwater NSW 2128 Ph; 02-97480098 Fx;

02-97480093

Email; [info@firetronics.net](mailto:info@firetronics.net) web site; [www.firetronics.net](http://www.firetronics.net)

Smoke alarms comply to AS 3786

240V smoke alarms certificate of suitability #CS 6747N

**Patented design # 2005100740**